

**FOR MORE INFORMATION,
PLEASE CONTACT:**



New Castle County, DE:

Cecil County, MD:

Vince Fiorelli

Phone: 302-736-7846

Email: vfiorelli@chpk.com

Kent County, DE:

Brennan McKone

Phone: 302-382-8346

Email: bmckone@chpk.com

Sussex County, DE:

Kelley Gabbard

Phone: 302-363-0581

Email: kgabbard@chpk.com

Sussex County, DE:

Tiffany Giroux

Phone: 302-217-7023

Email: tgiroux@chpk.com

Southwest Sussex County, DE:

Greg Denston

Phone: 410-834-7319

Email: gdenston@chpk.com

General Inquiry:

Jen Vandervort

Phone: 302-270-8653

Email: jvandervort@chpk.com



DELAWARE MULTIFAMILY NATURAL GAS INCENTIVE PROGRAM

Before you decide to build your next condo or retrofit your multi-family investment, contact Chesapeake Utilities about our multi-family cost savings programs.



October 2019



chpkgas.com

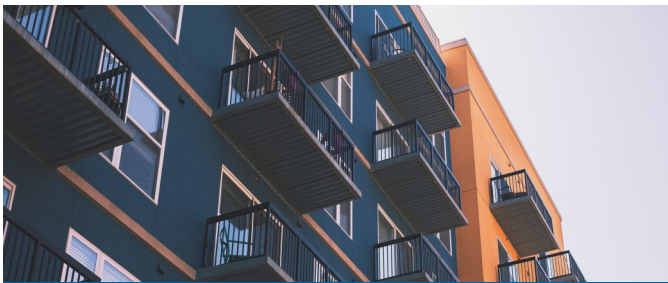
MULTI-FAMILY HOUSING INCENTIVES

Chesapeake Utilities has approval to assist in offsetting upfront costs to multi-family housing-unit developers.

The program includes incentives related to piping and venting gas appliances in new and existing construction.

Financial assistance is available if the project meets specific criteria, as defined by the Public Service Commission.

This program is designed to facilitate the installation of affordable natural gas equipment in homes by lowering upfront investment for owners and builders.



WHY CHOOSE NATURAL GAS?

- You can reduce costs while improving efficiency.
- It increases the market value of a home and the desirability of a rental unit.
- Natural gas is a cost-effective fuel for your tenants and potential buyers.
- Renters and home-buyers look for natural gas appliances for cooking and water heating.

REQUIREMENTS TO QUALIFY

- This is an incentive program only for Chesapeake Utilities' Delaware service territory.
- Multi-family Housing in this program is defined as a building with four or more units with each unit individually metered.
- New projects, as well as conversion projects, are included in this program. Any and all projects that submit for reimbursement are only eligible if they have not been previously reviewed by Chesapeake Utilities.
- Reimbursement will vary by project. It is important to submit a cost estimate prior to evaluation. Once the project is complete, Chesapeake Utilities will need documentation of the actual finished work.



CHESAPEAKE
UTILITIES